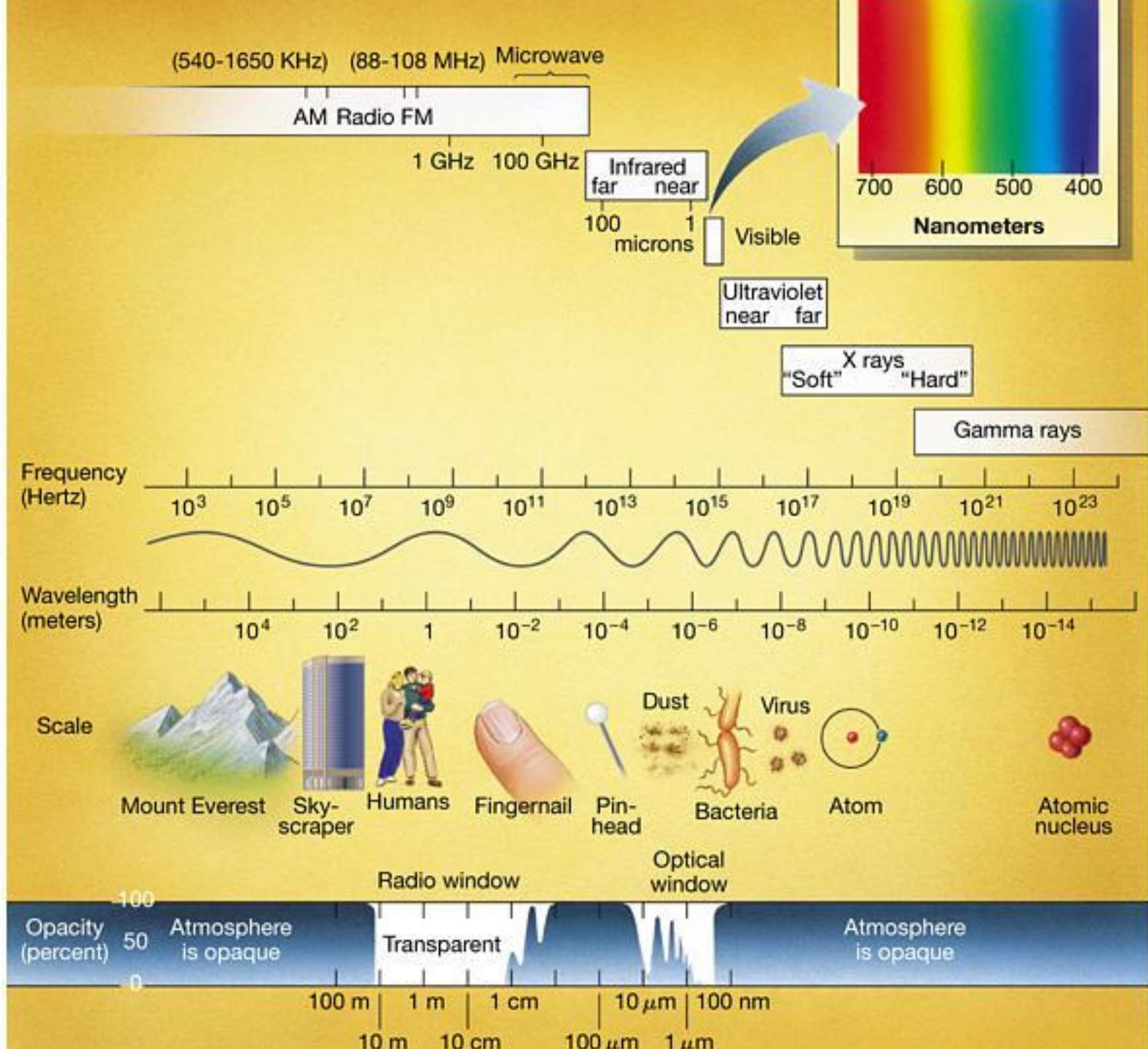


A deep-field astronomical image showing a dense field of stars and a prominent, bright, diagonal band of light, likely representing the Milky Way galaxy or a similar structure. The stars are of various colors, including white, blue, and red, and are scattered across the dark background. The bright band is composed of many smaller stars and dust, creating a glowing effect.

Astronomy and Electromagnetic Radiation





(Scroll down for text)

Distance: 37,000,000 [light-years](#) (11 kpc)

Image Size = 11 x 13.5 [arcmin](#)

[Visual Magnitude](#) = 8.4



Visible: [DSS](#)



Visible: [T. & D. Hallas](#)



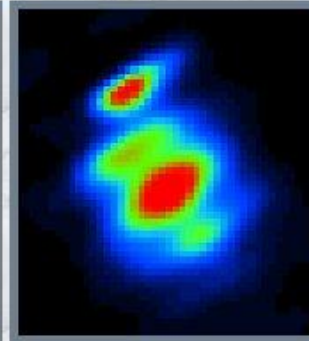
Visible: [TIE](#)



Near-Infrared: [2MASS](#)



Mid-Infrared: [ISO](#)



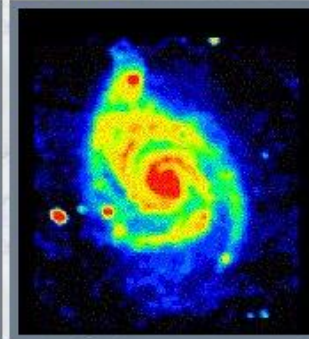
Far-Infrared: [IRAS](#)



X-Ray: [Chandra](#)



Ultraviolet: [FOCA/CNRS](#)



Radio: [VLA](#)

